



## Year 5 playing squash & Year 3 at Beach School.

## Worship Leaders at Canterbury Cathedral.

Good afternoon.

Welcome to Term 5!

It is lovely to see the sun shining and lots of summer uniform in school. Please remember to keep your child's hat or beret in their book bag just in case they need it. I would also like to remind you that children may wear only one pair of small stud earrings and a watch, but no other jewellery is permitted and children are not permitted to wear nail varnish.

We've had a busy start to the term with a trip to Canterbury Cathedral today for the worship leaders and our Easter Service on Wednesday afternoon. Year 3 have enjoyed Beach School and some of the pupils visited Glendale to read to the residents. KCC Road Safety team have had a great morning with Year 2 this week and will start their full Small Steps scheme with Year 3 next week.

Check the website over the next few days for your class newsletter which will detail the topics for this term (look on the class pages under the 'children' tab). Lots of blogs have also been added to the website from the learning this week, take a look!

Have a lovely weekend.

Mrs Jacobs

## PHONICS SCREENING: YEAR 1 & YEAR 2 PUPILS.

Information has been put into Year 1 and Year 2 book bags regarding the Phonics Screening Check which will be during the week beginning 10th June. Please take a look so you can see how to support your child. Thank you.

### DATES FOR YOUR CALENDAR

Monday 15th April - Year 2 Family Worship at 2.15pm - Y2 parents/carers welcome.

Tuesday 16th April - Year 3 Road Safety Scheme starts.  
Year 4 trip to London.

Wednesday 17th April - Year 3 to Beach School.

Thursday 18th April - PTFA meeting at Grind & Bake at 8.30am.

Friday 19th April - Year 3 & 5 go swimming.

Wednesday 24th April - Confirmation Service in Church 1.30pm.

Thursday 25th April - Bring a Bottle TAG Day.

Saturday 27th April - School Spring Fair, 12-3pm.

Monday 29th April - House competition: Bake-off, in the school hall at 3.30pm.

Thursday 2nd May - Whole school Mini London Marathon - details to follow.

## WELL DONE!

Our amazing Year 6 class have the highest attendance this week with 96%

Well done!



### Message from Mrs Davison, our school cook:

Now the weather is better could we please let parents know that we can provide a school packed lunch as an alternative.

I can offer:

sandwich, half a baguette or wrap with the following filling:

cheese ham jam egg tuna  
piece of fruit, crudites and cake or biscuit of the day.

## PTFA NEWS

Our Spring Fair is Saturday 27th April from 12 to 3pm. Please find all the details in the PTFA letter emailed to you.

We need volunteers to help with the fair - setting up, running stalls and clearing up. Please let Lucy know if you can spare some time - text: 07968196996.

Raffle tickets are being sold outside the main entrance around 3pm most days.

Dance club dancers have begun practising a Maypole dance to show at the fair. Please could families save the date so as many dancers as possible can come on the day. The Maypole dancing will begin at 2pm.

The date of our next meeting: Thursday 18th April in Grind and Bake at 8.30 am - all welcome.

OUR CLUBS HAVE RETURNED THIS WEEK.  
HERE ARE SOME PICTURES FROM STORY CLUB:



## CAN YOU HELP?

We are looking for someone to paint the sports markings onto our school playground. Sadly they have faded away. Please contact me if you know anyone that could help.

Thank you.

If you were a teacher, what would you teach?

## FAMILY TALK

DISCUSS THIS DURING CAR RIDES, MEAL TIME OR A WALK IN THE PARK

## ST EANSWYTHE'S FUNDRAISING WEEKLY MEAT RAFFLE,

£1 A NUMBER ENTER AS MANY TIMES AS YOU LIKE ONCE ALL THE NUMBERS ARE FULL, THE WINNER WILL BE DRAWN EVERY THURSDAY READY FOR DELIVERY, FOR FRIDAY STRAIGHT TO YOUR DOOR. YOU CAN CHOOSE WHICH MEAT PACK YOU WOULD PREFER, FROM BELOW . GOOD LUCK!!



£1 PER ENTRY, PAY FOR ENTRY AT SCHOOL RECEPTION, OR SEND MONEY WITH YOUR CHILD IN AN MARKED ENVELOPE.

## Uniform Shop

Year 6 will be running the shop on Wednesdays at 3.15-3.30pm outside the Woodward Hall doors, for a small donation except blazers that are priced at £5.

Feel free to have a browse and pick up a bargain!

## SWIMMING ON FRIDAYS

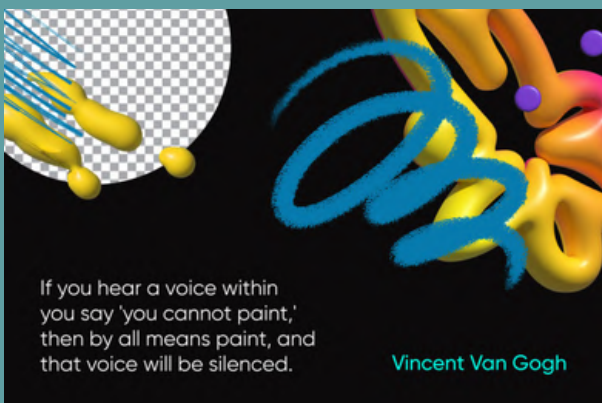
KS1 children can wear PE kits on Fridays.

Please ensure PE Kits come into school on Monday.

KS2 children need to all wear full school uniform.

This term, Year 3 & 5 will be going swimming every week.

It is World Artist Day on Monday 15th April.



Thank you for coming to our Easter Service! There are more photos on the blog on our website.



FREE WORKSHOP  
EXPLORING  
MEMORIES, LOCAL  
HISTORY, CREATIVE  
ACTIVITIES &  
RECORDING STORIES

# LEAS LIFT COMMUNITY MEMORY CAFE



**F**  
Folkestone  
Museum

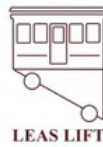
FOLKESTONE MUSEUM  
FRIDAY 26th April  
1000-1300

Aural History Recording  
1100-1200



FREE ACTIVITIES LEARN  
ABOUT HISTORY,  
HERITAGE, RESTORATION  
AND THE LIFT

# LEAS LIFT FAMILY ACTIVITY DAY



**F**  
Folkestone  
Museum

FOLKESTONE MUSEUM  
SATURDAY 27TH APRIL

1000-1200 & 1330-1530

